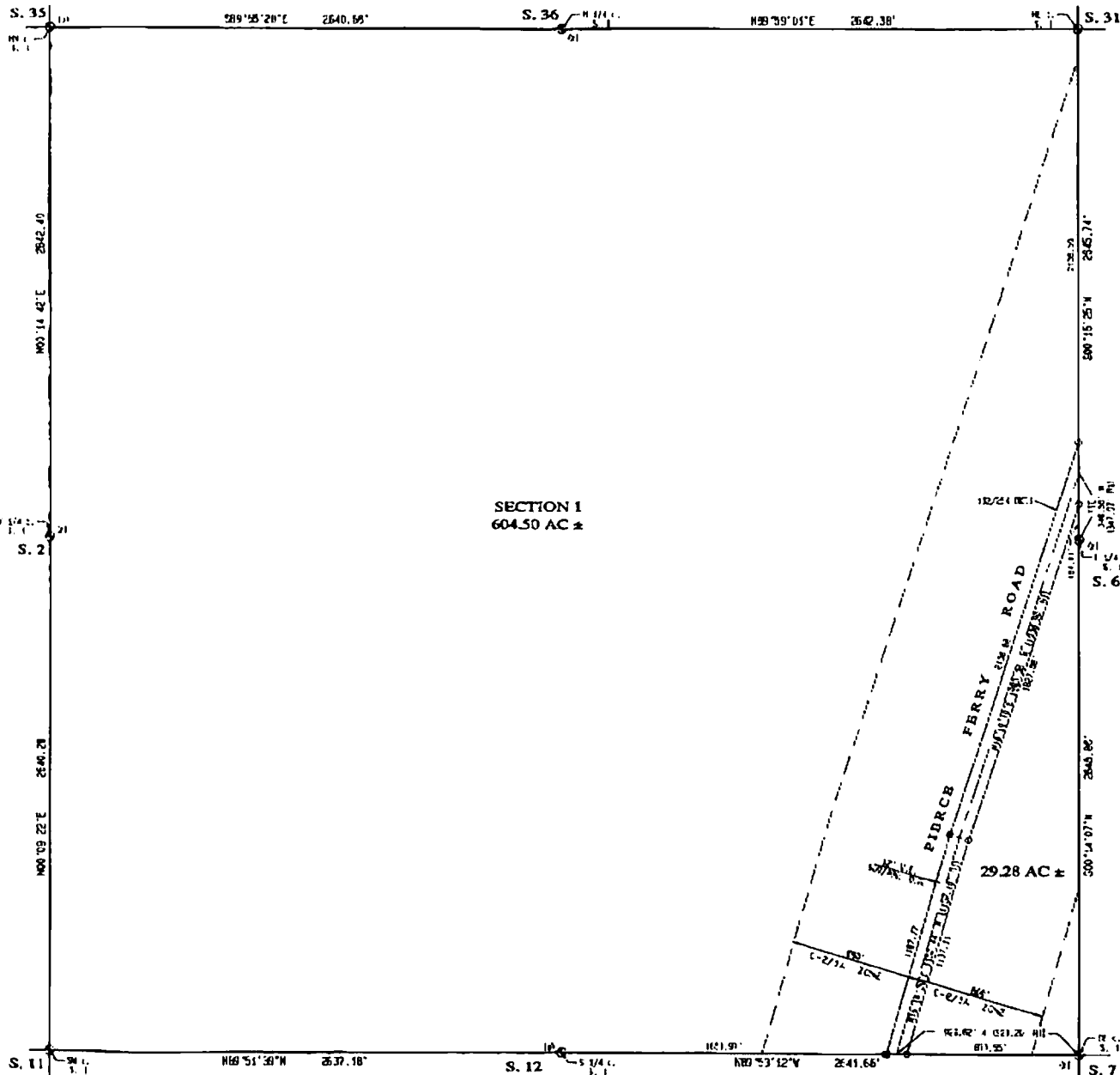


# RECORD OF SURVEY

## A DEPENDENT SURVEY AND SEGREGATION OF SECTION 1, TOWNSHIP 27 NORTH, RANGE 18 WEST OF THE GILA AND SALT RIVER MERIDIAN, MOHAVE COUNTY, ARIZONA



### NOTES

PERIOD OF SURVEY: SEPTEMBER THRU OCTOBER, 2006  
 THIS SURVEY IS BASED ON THE 1983 STATE PLANE COORDINATE SYSTEM, ARIZONA, WHICH IS DERIVED FROM SEGREGATIONS TAKEN FROM A LEICA GLOBAL POSITIONING SYSTEM. ALL BEARINGS AS SHOWN HEREON ARE GRID BEARINGS. ALL DISTANCES AS SHOWN HEREON ARE GRID DISTANCES. THE COORDINATION SCALE FACTOR USED FOR THIS PROJECT BEING 0.9997518.

### LEGEND

- ⊙ PD 2 1/2" U.S.G.D. BRASS CAP MOVEMENT 1/2" D.I.P.
  - ⊙ PD 2 1/2" U.S.G.D. BRASS CAP MOVEMENT 1/1" D.I.P.
  - ⊙ PD 3 1/2" U.S.G.D. BRASS CAP MOVEMENT 1/3" D.I.P.
  - PD 2" BRASS DISC MADE
  - PD 3 1/4" BRASS CAP, R.S. 13022, V.O.Z.
  - SET 5/8" REBAR 1/1 1/2" ALUM. CAP, RLS 24514
  - M INDICATES MEASURED DATA THIS SURVEY
  - RI INDICATES RECORD DATA PER IN 132, 70, 254 DOCKETS
- ALL DISTANCES AS SHOWN HEREON ARE MEASURED DISTANCES UNLESS OTHERWISE NOTED



### SURVEYOR'S CERTIFICATE

I, THOMAS H. CHRISTOPHER, HEREBY STATE THAT THE SURVEY AND MEASUREMENT HAS BEEN MADE BY CORRECTION AND SUPERVISION AND THAT THE RESULTS OF SAID SURVEY ARE ACCURATELY REPRESENTED ON THIS PLAN.



### RECORDER'S CERTIFICATE

FILED AND RECORDED AT THE REQUEST OF MOHAVE ENGINEERING ASSOCIATES, INC.  
 BY \_\_\_\_\_ CLERK  
 IN BOOK \_\_\_\_\_ OF RECORD OF SURVEYS ON PAGE \_\_\_\_\_ RECORD OF MOHAVE COUNTY, ARIZONA.  
 BY \_\_\_\_\_ DEPUTY RECORDER RECORDER  
 RECEPTION NO. \_\_\_\_\_

PREPARED FOR  
 RED LAKE INVESTMENTS, L.L.C.  
 4138 S. RIVINGTON BLVD.  
 PHOENIX, AZ 85044  
 LAS VEGAS, NV 89103  
 PH. (702) 438-1010  
 FX. (702) 363-2236

MOHAVE ENGINEERING ASSOCIATES, INC.  
 3220 S. GARDEN VALLEY RD. STE. A  
 KINGMAN, AZ 86401  
 PH. (908) 753-2627  
 FX. (908) 753-5118

JOB NO.: 06-JEB-06  
 DRAWN BY: S. WILLIAMS  
 DATE: 10/20/06